



**'Tis the season to be jolly... almost!**



We hate to mention the 'C' word with Autumn having only just arrived, but here at M.A.D we're getting ready for Christmas - and if you want to get ahead with

your festive shopping you've come to the right place!

This year we'll have plenty of gifts and stocking fillers perfect for your spirits and art-loving friends and family. Take a look at our website where you'll find:



- This **gift pack** of three 5cl London Dry Gin miniatures. (left), featuring our 'Sea, City & Land' bottle label artwork.
- A brand new **M.A.D e-gift card** - perfect for those who want to choose their own tipple!
- Eye-catching **bottle top planters** for transforming your M.A.D empties into beautiful herb gardens.

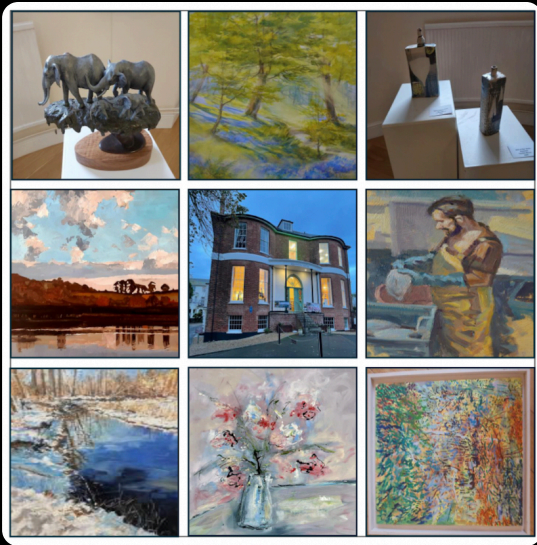
And there are lots of **other gifts** including our A4 and A3 prints (some limited edition signed prints), sunglasses, aprons and diffuser bottles. All items are available from our **website** with a 48-hour delivery slot direct to your door.



If you'd rather buy gifts at one of our festive events, here's where you'll find us in the run-up to Christmas:

- **Dartmouth Food Festival** - October 26-27.
- **RHS Garden Rosemoor** - November 15-17.
- **Mapperton House Christmas Market** - November 23-24.
- **Symondsburys Christmas Market** - December 6-8.
- **Bath BRS LI Christmas Market** - December 12-15.
- **Elys Department Store**, Wimbledon - December 21-23.





## Works of art

We're delighted to be sponsoring an award in the South West Academy's Open Exhibition in Sidmouth - we've seen some amazing artwork!

The winner will be announced on October 31 - find out more about **South West Academy** and see which artist we selected - it was a very, very difficult choice...

## M.A.D's winning ways



We celebrated our first birthday back in April and we couldn't be more proud of our spirits and the artists whose work appears on our bottle labels, as well as all the other businesses and people who have helped us on our journey.

We've come a long way in the last 18 months and have been delighted to receive some accolades - earlier this year our London Dry Gin won the contemporary category in the **Gin Guide Awards**, while our Watermelon & Thyme Vodka were awarded gold and silver medals respectively in the **London Spirits Competition**.

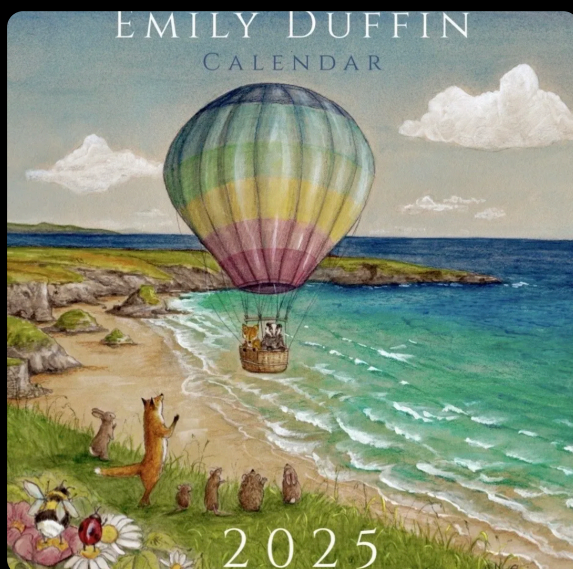
We were shortlisted and highly commended in the **Gift of the Year** award in May, and won the **South West Rural Start-up of the Year Award**, going on to be a finalist in the national competition in September.

We were selected by **Indie Pop-Up** to have a week-long pop-up shop at Elys department store in Wimbledon in August, giving us valuable experience of life in a large store in the retail environment - and they've asked us back for Christmas!

We've also celebrated some other significant milestones: we've commissioned two new artists for our **London Dry Gin** labels this year - Emily Duffin and Natasha Whalley, whose work appears on our 'Fergie' and 'Festival' editions - and we're about to unveil another artist whose work will be adding to our M.A.D collection... all will be revealed soon!

Finally, we've been to fairs and festivals up and down the country over the spring, summer and autumn, meeting lots of our lovely customers face to face - with more events on the way this winter. It's definitely a M.A.D world!

## Artist news: Emily Duffin







**Emily Duffin**, whose charming farmyard scene is featured on our **London Dry Gin** bottle, has launched a **2025 Country Calendar** (above left), illustrated with the woodland characters she shares on her **Instagram** page.

Emily, who grew up on a farm and studied fine art at university, lives in a small Northamptonshire village nestled between rolling hills and working farms. Many of her illustrations include characters she meets along the way, including the village's resident donkey and Shetland ponies. She says her inspiration comes from the small moments of magic that occur in the every day lives of animals.

Alongside the 2025 calendar, Emily will also be launching three new Christmas card designs, again featuring her 'Forestry Folk' (pictured above - top right & bottom left). She has around 15 other Christmas card designs from previous years - all hand decorated with a little sparkle!

Lastly, she will be launching a Christmas print for the first time (above, bottom right). Her calendar is on sale now and all other items will be available from Emily's website in the coming month or so.

## Artist news: Chris Pompa



For the last few months Chris Pompa - the artist behind our **Blueberry & Bergamot Gin** label - has been working on a commission for the **Short Breaks Scheme**, a Welsh Government grant fund that provides short breaks for unpaid carers in Wales.

He was approached to make an original piece of art that would highlight and celebrate the fantastic work carers carry out, and the piece was unveiled on October 3.



Chris has also recently provided an artwork on long-term loan to **Cardiff Record Exchange** called 'Lovers' (pictured above) - a mosaic made from recycled materials (glass, plastic, photography, paintings), created on a bedroom door being discarded from a neighbour's house.

Visit **Chris's website** to see more of his work.

## Artist news: Emma Taylor and Jason Dorley-Brown



**Emma Taylor** has just completed a window mural for a pop-up shop in Bath, for two local charities - **Mentoring Plus** and **Off the Record**. The charities help and support hundreds of children and teenagers with mental health and wellbeing.

Emma is also about to do a mural for **Wiltshire Music Centre** and has just launched her new **Etsy shop** with a range of framed prints to choose from, including landscapes, animals and wildlife - ideal birthday, wedding, Christmas or house warming gifts.

## ASK ABOUT A COMMISSION



'9 Belmont'



'Nuala'

DO YOU HAVE A FAMILY HOME THAT YOU NEVER WANT TO FORGET?  
A BELOVED PET YOU WANT TO REMEMBER? MAYBE A STREET THAT HOLDS  
SWEET MEMORIES OR A BUSINESS THAT HAS A HISTORY TO CELEBRATE?

WE CAN CREATE AN IMAGE IN MAY DIFFERENT FINISHES, FROM WALL VINYL  
TO PERSPEX, METAL, WALLPAPER OR GOOD OLD GICLEE PRINTS.

JASON AND EMMA LOVE NOTHING MORE THAN TO CREATE A BESPOKE  
IMAGE BASED UPON THE STORY YOU WANT TO TELL.

As Jet Pictures, Emma and Jason Dorley-Brown, whose city-themed artwork *Separation & Amalgamation* is featured on our [London Dry Gin](#) bottle label, are taking on Christmas commissions.

They're offering to do some creative, fun and colourful images of people's houses and pets. Visit their [website](#) to find out more.





## Where in the world?

We often wonder where our bottles end up - we know they go to all corners of the UK, from Cornwall to the Outer Hebrides, and we've also sent them on their journeys to far-flung places including Canada, Australia and New Zealand thanks to our pop-up shop at Elys in Wimbledon, where overseas customers bought them to take home.

We'd love to hear where in the world your bottle is and where it's placed in your home - follow us on **Instagram** @modernartdistillery and tag us in a photo of your M.A.D spirits bottle!

### Modern Art Distillery

71-75 Shelton St, Covent Garden, London WC2H 9JQ

Tel: 07940 098741

[www.modernartdistillery.com](http://www.modernartdistillery.com)

Instagram: @modernartdistillery

This email was sent to {{contact.EMAIL}}

You've received it because you subscribe to our newsletter.

[Unsubscribe](#)

